

School of Community Medicine

School of Community Medicine	E-1
Mission	E-3
Vision	E-3
Objectives	E-3
Board of Governors and Advisory Council	E-4
Council of Deans	E-4
Master of Science in Community Medicine Program	E-4
Faculty and Staff	E-4



School of Community Medicine

Mission

The KGI School of Community Medicine (SOCM) intends to prepare skilled physicians and health professionals from underserved and underrepresented communities to partner with those communities to improve health, lower the burdens of illness, and reduce the need for medical care.

Vision

We have the tools—the science, the technologies, and the understanding of how to use them—to change what we’ve done before.

- We can improve health.
- We can prevent many illnesses before they threaten one’s quality of life, let alone livelihood, and even life.
- We can help individuals who live with a chronic condition make the decisions to live healthier lives and avoid the severe downstream consequences of their illness.
- We can use today’s technologies and science to provide guidance directly to families to help them stay healthy and decide whether or not they need to seek medical care from the formal medical care system.
- We can identify who is at risk of developing severe conditions because of their genetics or where and how they live.
- We know how to do these things! To realize their promise in practice, KGI plans to prepare physicians and other healthcare professionals with the perspectives, knowledge, and skills to help communities in need.

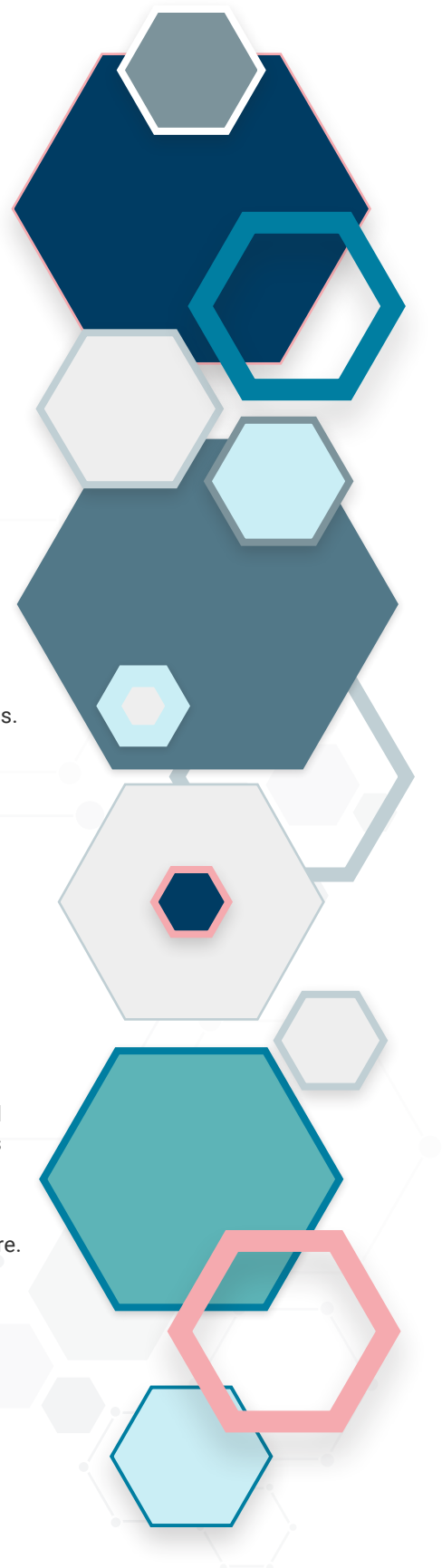
Objectives

While we cannot solve the nation’s healthcare problem’s single-handedly, KGI will demonstrate how to select and educate highly qualified healthcare professionals to choose to work in the communities that most need their help and expertise.

KGI will partner with healthcare organizations, public health agencies, safety net clinical systems, NGO’s, and industry to improve health and lower demand for care.

KGI will bring new people into medicine and the healthcare profession.

KGI will prepare students differently and plans to do so at a cost that is affordable for those students the nation most needs to train.



Board of Governors and Advisory Council

The KGI SOCM Board of Governors and Advisory Council provide insight and strategic guidance to the leadership team, spearheading the establishment of the KGI SOCM. It consists of executive-level leaders in healthcare, medical education, business, civic engagement, and finance.

To view a list of the SOCM Board of Governors and Advisory Council, please [click here](#).

Council of Deans

For those pursuing medical school, the MSCM program has links with a number of medical schools in the United States and formed a Council of Medical School Deans to ensure that our curriculum prepares graduates properly for further professional education.

Master of Science in Community Medicine Program

The KGI SOCM has created an online two-year Master of Science in Community Medicine (MSCM) degree. The MSCM program will prepare a new healthcare professional, a leader in advanced community medicine. Graduates of this program will be community medicine practitioners and leaders who work in underserved and underrepresented communities for careers devoted to improving health, preventing illness and injury, and detecting treatable medical conditions early enough to avoid premature death and unnecessary poor health.

Students enrolled in the MSCM program will be prepared for employment as leaders working in community healthcare settings or can continue into medical school or other health professions (physician assistant, occupational therapy, dentistry, etc.).

Faculty and Staff

To view a list of the SOCM Faculty and Staff, please [click here](#).

